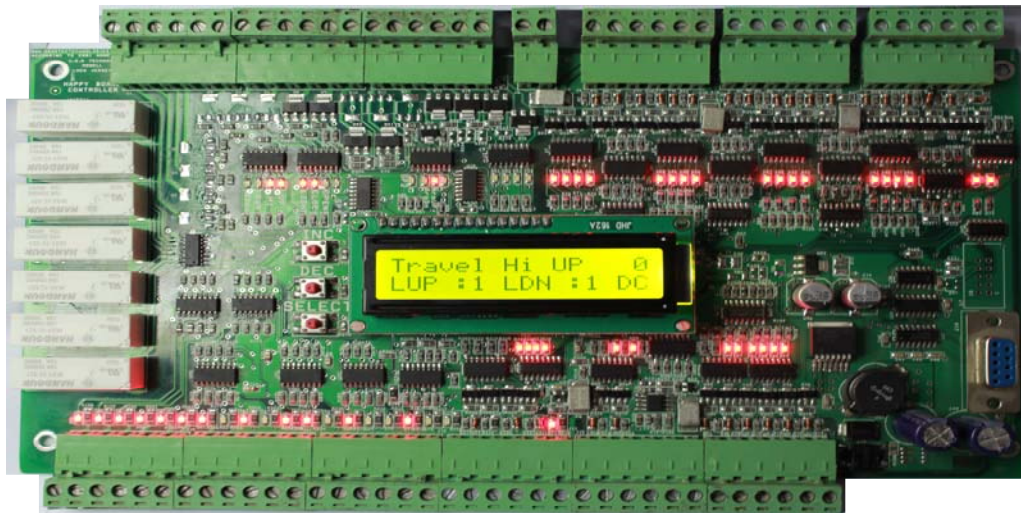




## Elevator Controller (Happy Board)



- Can be up to **15 stops Down Collective** in a single board.  
**11 stops Full collective** in a single board.  
**23 stops** with Extension board, depending on floor count.
- Built-in LCD screen for programming the parameters.
- All the errors that occur during running can be browsed on the LCD and all elevator status, direction, and floor number can be monitored.
- Powered up by the main control panel with 17-24V.

## Main Features:

<b>Platform</b>	<b>Risk processor</b>
<b>Type</b>	Single – Dual Speed - VVVF - Hydraulic
<b>Mode</b>	Simplex, Simlpo & Group
<b>Fault Capture</b>	Display more than 200 fault messages
<b>Status information</b>	Status of the elevator, door, mode and Limit switch Up &Down are displayed
<b>Fault count</b>	Calculate fault of type 2
<b>Shaft information</b>	End of the Shaft in the Up, Down Direction Slow down in the final stop in Up, Down Direction Level Zone Elevator Position is saved at each stop
<b>Indicator signal</b>	Gray, Binary, 7-Segment
<b>Number of Stops</b>	11,15 and up to 31 Stops
<b>Door Type</b>	Swinging, Automatic
<b>Door Controls</b>	3 inputs
<b>Door parking Status</b>	Parking Opened or Closed door
<b>Floor Stop Time</b>	Time of Stopping at each station
<b>Home floor</b>	Home Floor Number
<b>Car Light</b>	Light timer
<b>Home Floor timer</b>	Automatic Return to Home floor after preset time
<b>Inspection Mode</b>	Elevator goes to inspection/service mode
<b>Drop Out</b>	To Cancel all the outside calls
<b>No Load</b>	At preset floor, it will Cancel all the inside calls if the door wasn't opened
<b>Full Load</b>	The elevator will not serve the outside calls
<b>Emergency Stop</b>	It will stop immediately and cancel all inside calls
<b>Fireman Operation</b>	It will Cancel all calls and go to Fireman floor
<b>Communication</b>	Dual row connector port used to Monitor and controlling elevator Installation